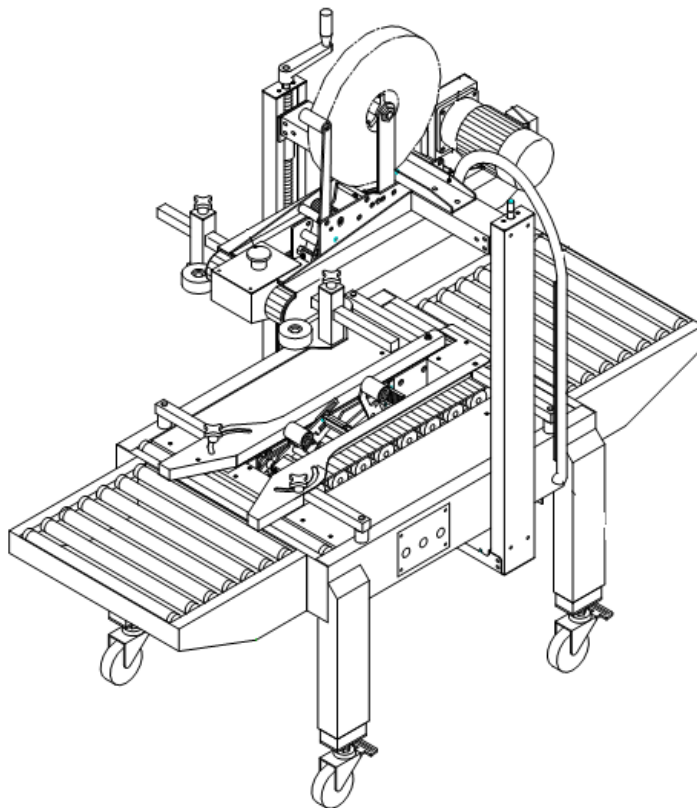


TB-2/3

Industrial
Case Taping System

User Guide



EASTEY[®]

TB-2/3

Industrial Case Taping System

User Guide

Revised 01/13/2012

P/N 5001658 Rev A

Copyright and Trademarks

Copyright ©2012 Eastey Enterprises

All rights reserved. All trademarks and brand names are the property of their respective owners.

Eastey
7041 Boone Ave. N
Brooklyn Park, MN 55428

Phone: (763) 795-8856; Fax (763) 795-8867; 1-800-877-5658
www.eastey.com

Contents:

- Safety 7**
- Introduction 9**
 - General System Description..... 9
 - Specifications 10
 - Options..... 10
- Installation 12**
 - Location Requirements 13
- Operation 16**
 - Loading the Tape Cartridges..... 16
 - Power..... 17
 - Control Panel 18
- Adjustments 21**
 - Height and Width Adjustment..... 21
- Maintenance 23**
 - Rollers..... 23
 - Cutting Knives 23
 - Changing Knife Blades..... 23
- Parts List..... 27**
 - Electrical..... 27
 - Upper Taping Seat 31
 - Vertical Column..... 34
 - Lower Taping Seat 36
 - Machine Body 39
 - Tape Cartridge 41
- Warranty Statement 46**
- Customer Support..... 49**

Safety

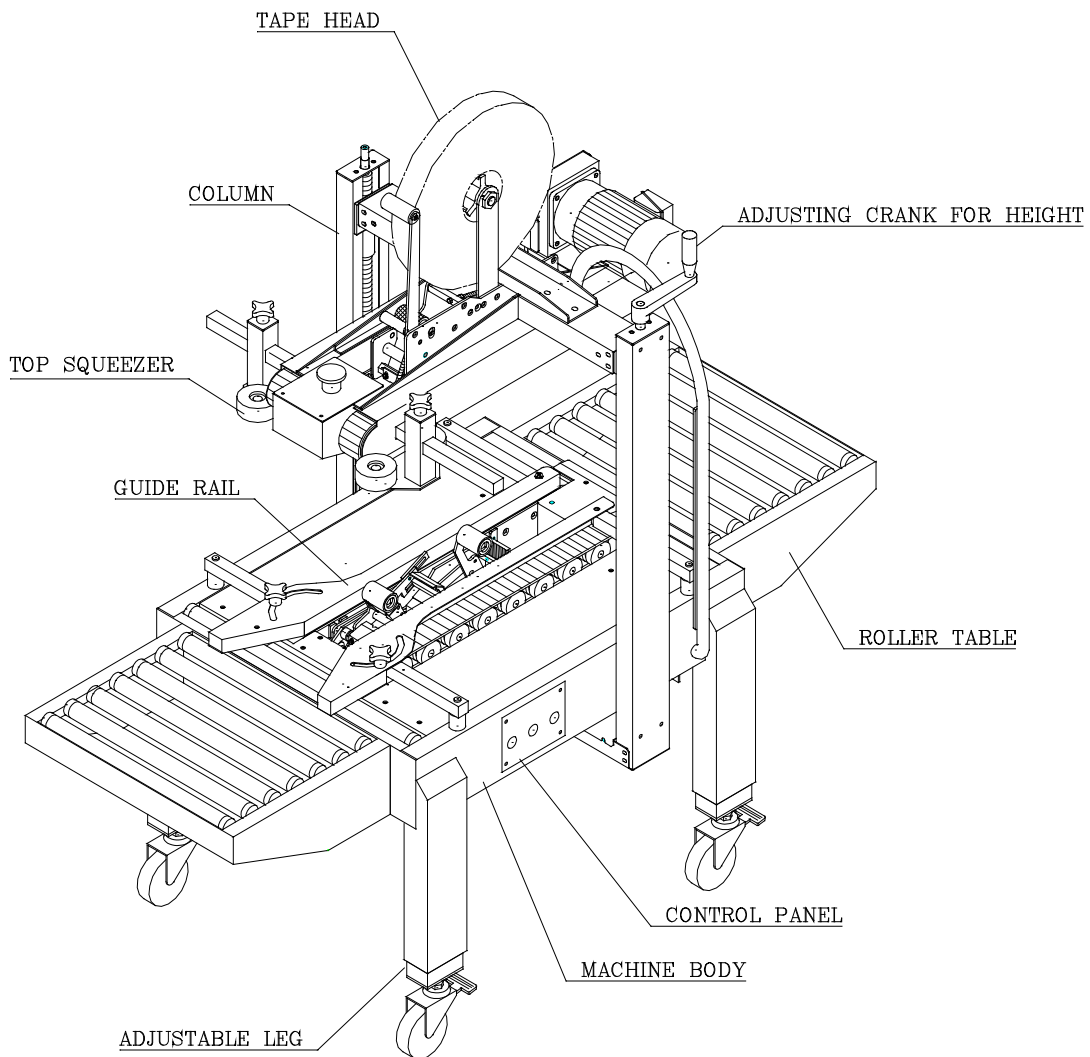
General Safety Precautions

Before installing, operating or servicing this equipment, please read the following precautions carefully:

- This machine is equipped with moving belts. Do not place hands near the rear of this unit when the belts are moving as fingers may be pinched where belts enter the frame. We suggest the use of a roller-type exit conveyor or pack table for your cases. Always remove boxes after they clear the exit end of the machine.
- Observe caution when near the tape applying cartridges or when threading tape. The knife is very sharp, automatically operated and is linked to the wipe down rollers.
- Do not attempt to open or work on the electrical box, junction boxes or other electrical components of the unit without first disconnecting power to the machine. Electrical shock hazard exists if power is not disconnected.
- Do not by-pass any factory-designed safety features such as knife guards, interlocks, switches, etc.
- Do not place hands or body inside the confines of the machine unless the head mechanism is securely fastened, and the electrical supply is shut off.
- Never provide service or clear a box jam when machine is running.
- When feeding a box into the unit, always hold down the box top and present the box to unit. Release hands as soon as the belts begin to take the box.
- Do not wear loose clothing such as ties, scarves, jewelry etc. Long hair should be pulled back and/or covered while operating this machine.

Introduction

General System Description



Specifications

Model	EXC-103TB
Tape	1.5" (36mm) or 2" (50mm)
Belt speed	23m/min
Capacity	(L) 4.7in (120mm) to unlimited (W) 5.5in to 19.7in (140mm to 500mm) (H) 4.7in to 19.7in (120mm to 500mm)
Consumption	450W
Machine size	(L) 64.5in (1637mm) (W) 29.7in (754mm) (H) 54.2in (1375mm)
Machine net weight	338lbs (153kg)

Options

- Stainless Steel
- 3" tape head
- Case Size: (W) 27.6in (700mm) (H) 27.6in (700MM)

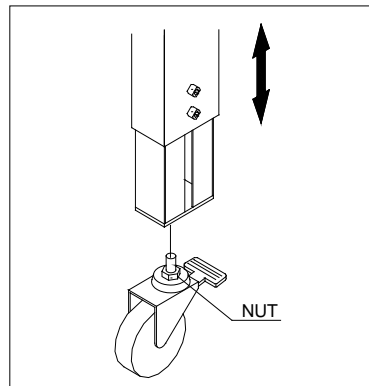
Installation

Carefully unpack the outer carton. Avoid damaging the machine body.

Remove the shipping bolts that secure the Case Taper to the shipping pallet. Lift the Case Taper off the pallet.

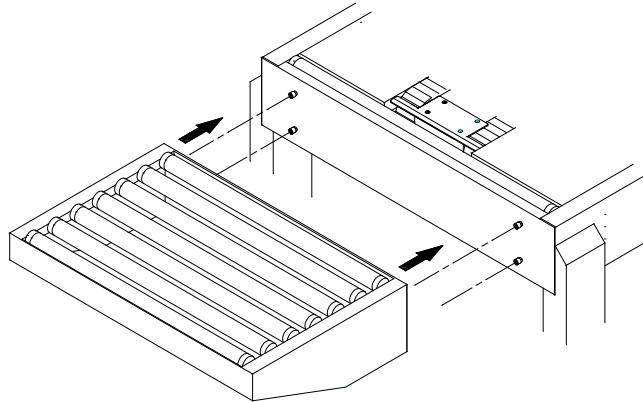
CAUTION! The SB-Ex Ran Case Taper is a very heavy piece of equipment and will require a forklift or several people to move safely off the shipping pallet.

Install the 4 casters on the Case Taper legs. (Please refer to the diagram of casters and assembly hardware below).



CAUTION! Obviously you will have to raise the Case Taper off the floor to install the casters. Use proper equipment when lifting the case taper. Ensure the SB-Ex Ran Case Taper is secure and will not shift while the casters are being installed.

Attach the roller table to the machine body



To move the SB-Ex Ran to the desired location, you will need to use a pallet jack or fork lift. If you have purchased the optional locking casters you can move the taper easily over a smooth flat surface.

Location Requirements

When installing the SB-Ex Ran Case Taper please be aware of the following considerations:

1. The mounting surface is flat and level.
2. Conveyor or packing table height.
3. Alignment with packaging line.

When the SB-Ex Ran Case Taper is positioned in the operating location you will need access to:

1. The power switch.
2. Height and width adjustments.
3. Tape loading (Both upper and lower tape cartridges).

A packing table may be provided at the in feed end where the packer can fill boxes and close the flaps prior to feeding the boxes into the machine. It is also convenient to have a pack table at the exit end of the taper.

It is essential that the table and conveyor be at the machine bed height.

The machine should be placed on a flat, level floor so that it does not rock or move. We recommend that the machine be securely locked in place when used.

Mount air pressure regulator to the 3 position switch and connect with air supply.

Operation

Loading the Tape Cartridges

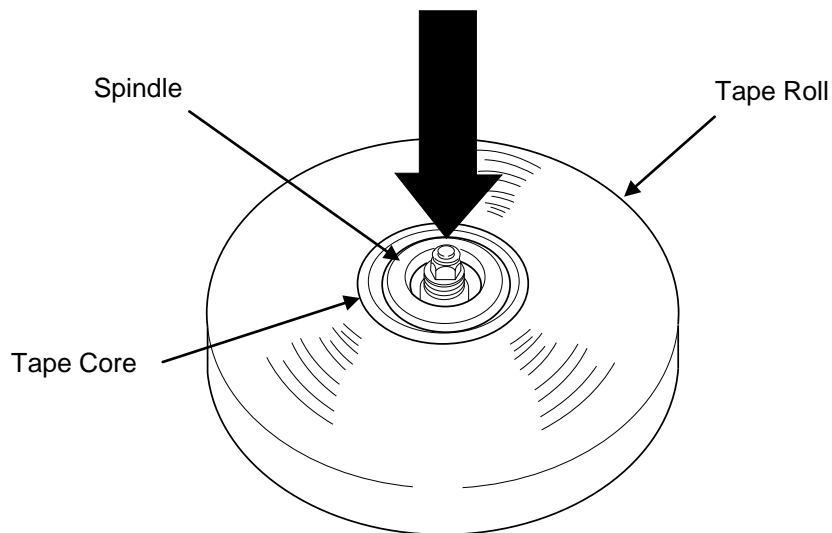
Turn the main power switch to “Off” and disconnect the power.

CAUTION! To avoid personnel injury, remove the tape cartridge before loading tape.

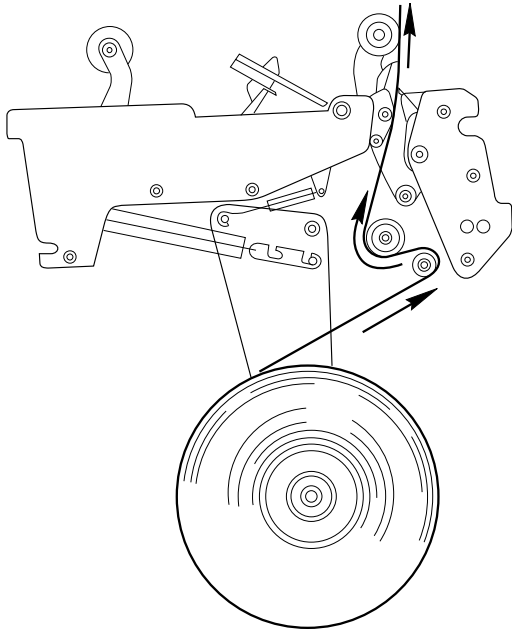
When handling the tape cartridge be careful to avoid contact with the tape cutting blade.

After the taping cartridge has been removed push the tape roll onto the tape core assembly.

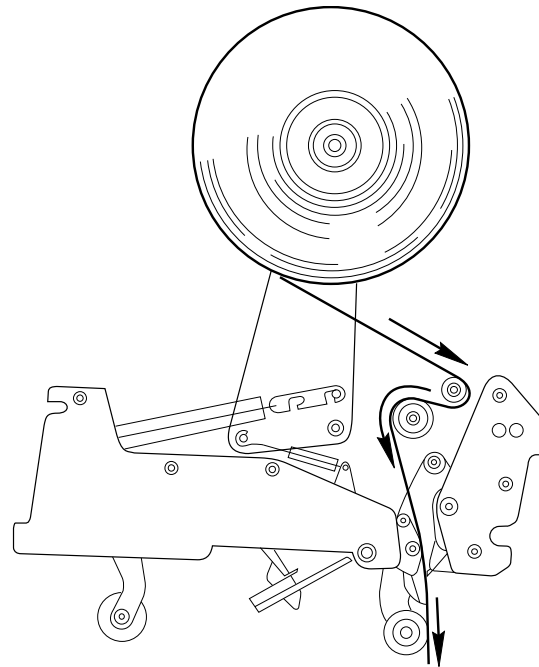
NOTE: Make sure the tape roll is pushed all the way on the tape core assembly.



Carefully thread the new tape according to the following diagram.



Bottom Cartridge



Upper Cartridge

Return the tape cartridge to the operation position.

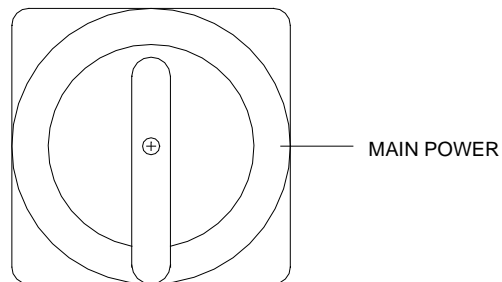
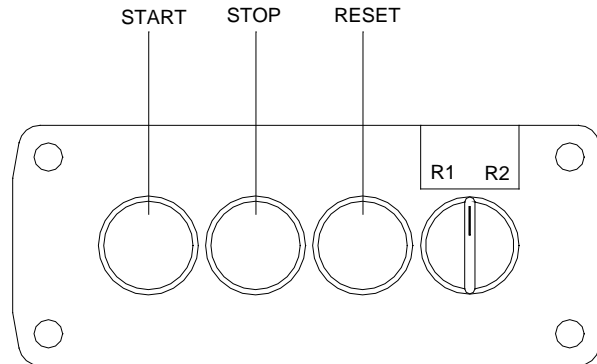
Power

Plug the power supply cord into a properly wired and grounded outlet.

Press start button.

CAUTION! When the power is turned on be aware of moving parts and belts

Control Panel



POWER

When the main power switch is in the “ON” position the power lamp should be illuminated.

R1

This mode functions as memory for the height of the carriage position. If the operator has equal height or similar height of packages, this mode memorizes and stays at the position of last taping job. This function enables operators to speed up their packaging time, the top carriage moves up slightly after each taping. It reduces the taping time for the following cartons with equal height.

R2

This mode allows the top carriage to stay at top position. It is suitable for operations that have various sizes of taping cartons.

The top carriage will always stay at the top position when in this mode. It enables changes of wider range cardboard boxes.

START

Press the button to get automatic or manual program running.

STOP

Press this button to stop all operation. If operator needs to change modes the operator is required to press the STOP button and then press START button for operation.

RESET

All taper settings will return to the home position when RESET button is pressed.

EMERGENCY STOP

Press the button to get emergency stop.

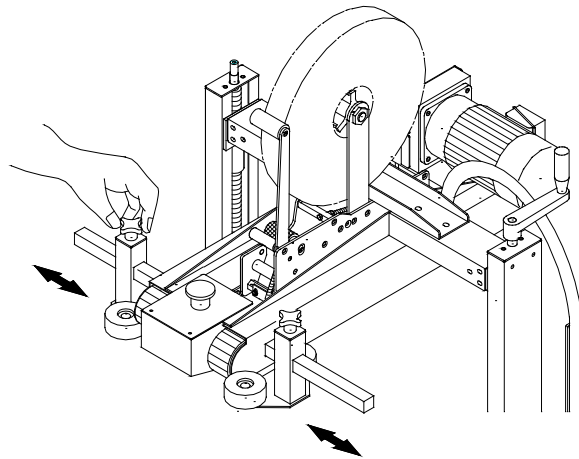
Main Power

Used to turn the main power on an off.

Adjustments

Height and Width Adjustment

Place a box filled with product on the in feed conveyor. Position the side drive belts and top section to accommodate the desired box width and height by using the width and height adjustment crank. Follow by adjusting the tow handle knobs against the sides of carton to secure the carton's center.



Maintenance

The SB-Ex Ran Industrial Case Taping System will provide many hours of maintenance free operation. There are a few items that may require attention from time to time.

Rollers

Make sure rollers stay clean and grease free. If you should have to clean the rollers simply wipe them down with a clean lint free cloth. If a more thorough cleaning is necessary wipe the rollers down with a mild detergent and water and let dry. **Never use harsh or abrasive cleaners or chemical agents when cleaning the rollers.**

Cutting Knives

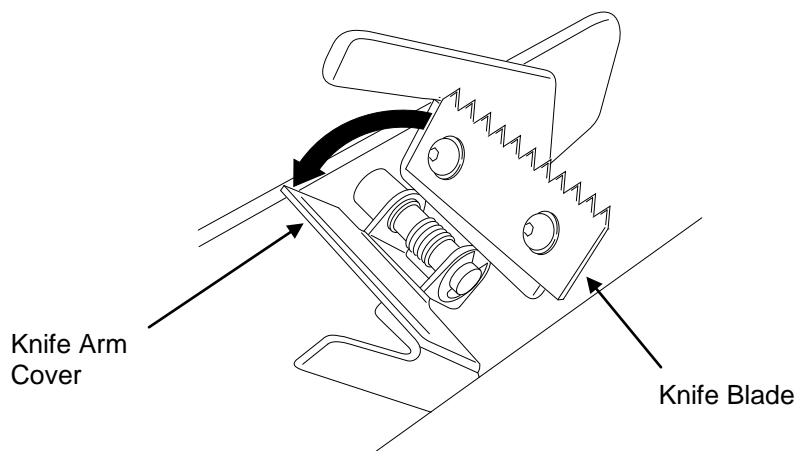
Occasionally inspect the cutting knives to ensure they are clean and free of adhesive residue. Make sure the cutting knife is sharp by inspecting cuts in the tape. Cuts should be straight and neat. If the quality of cuts is eroding, the knife blade is dull and should be replaced.

Changing Knife Blades

CAUTION! Always be aware of the cutting edges while replacing the knife blades. Handle the knife blades carefully.

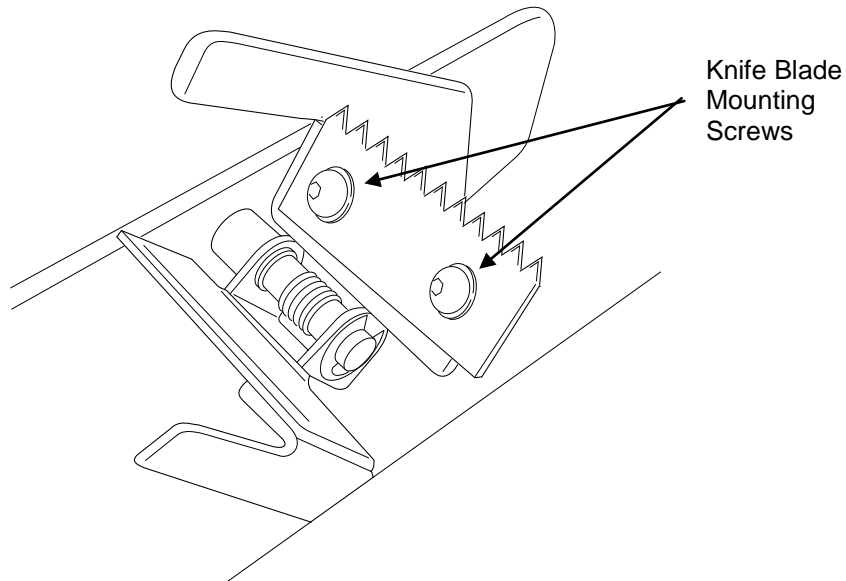
Turn off and unplug the taper.

Open knife arm cover.

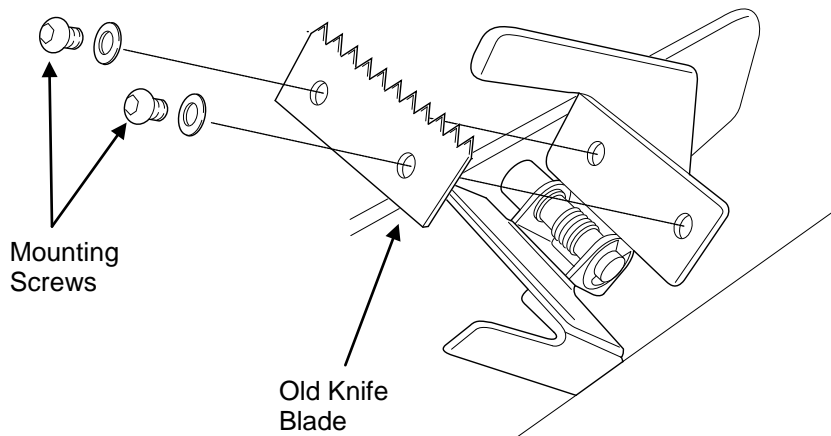


For the upper tape cartridge remove the cartridge from the machine before changing the knife blade. The lower cartridge can remain in the taper while changing the lower knife blade.

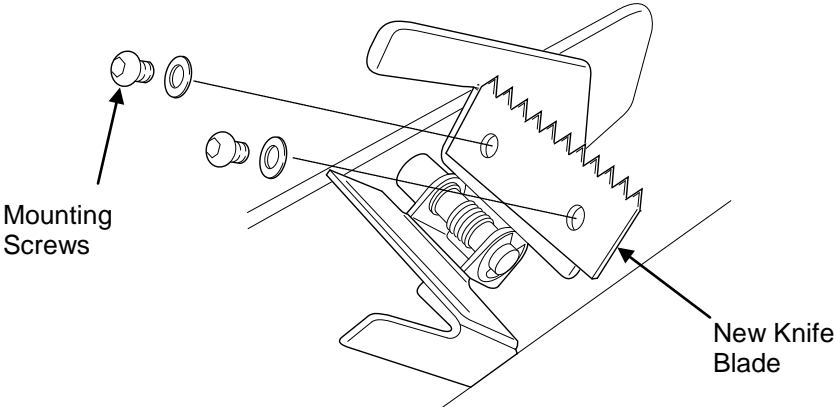
Remove the two knife blade mounting screws.



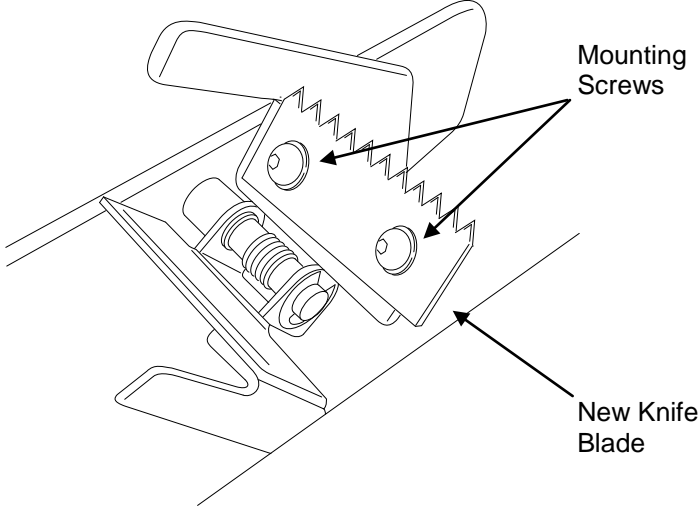
Remove the old blade.



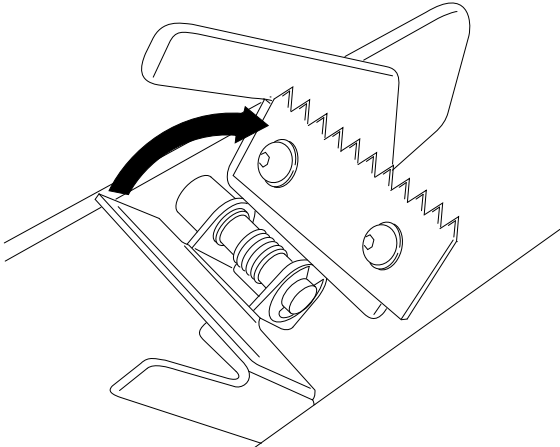
Install a new knife blade.



Replace mounting screws.



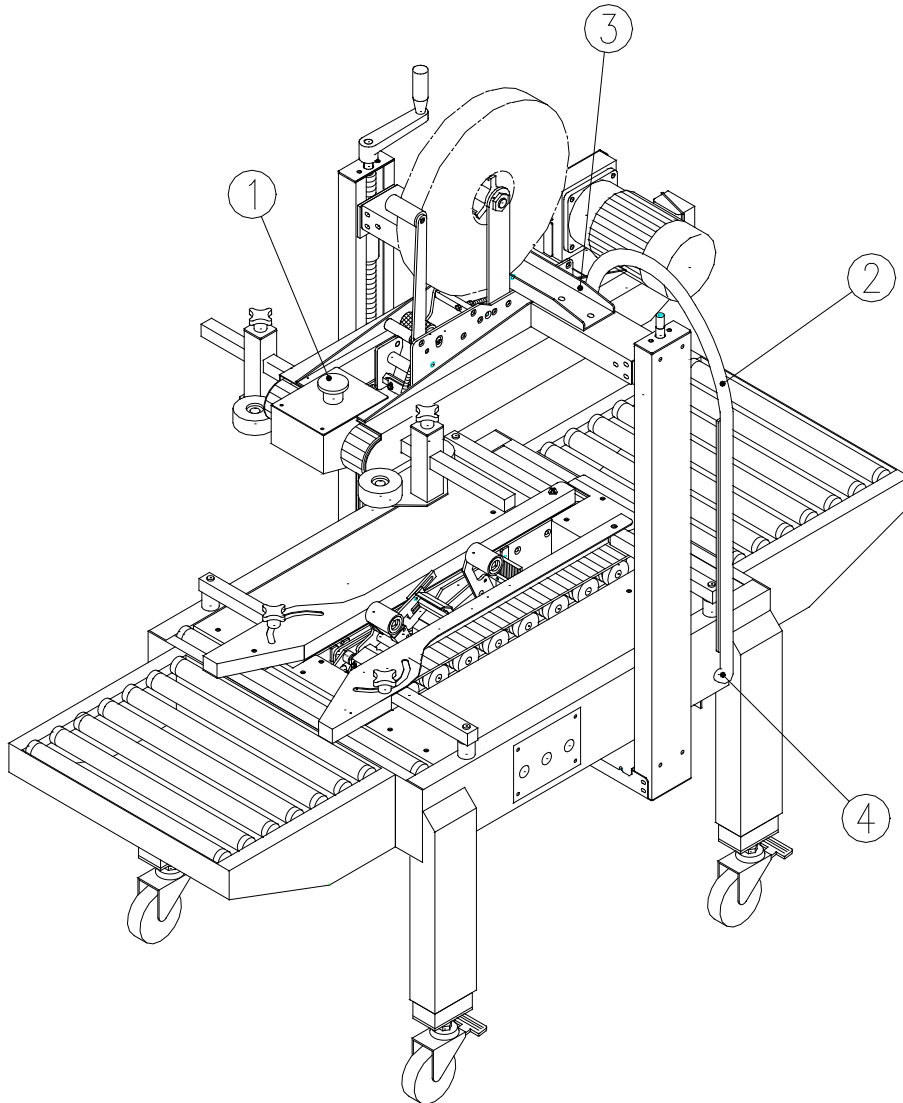
Close knife arm cover.

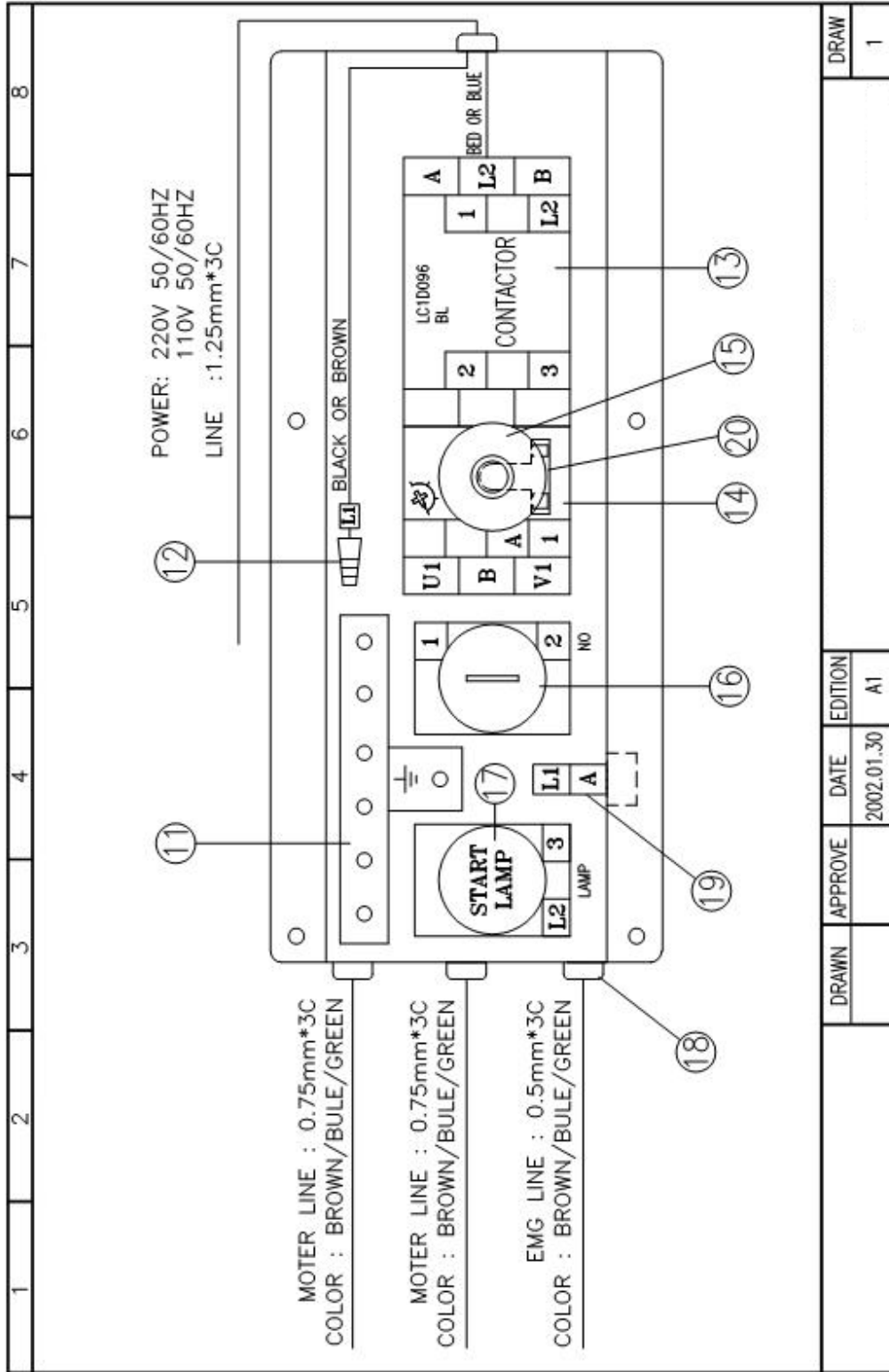


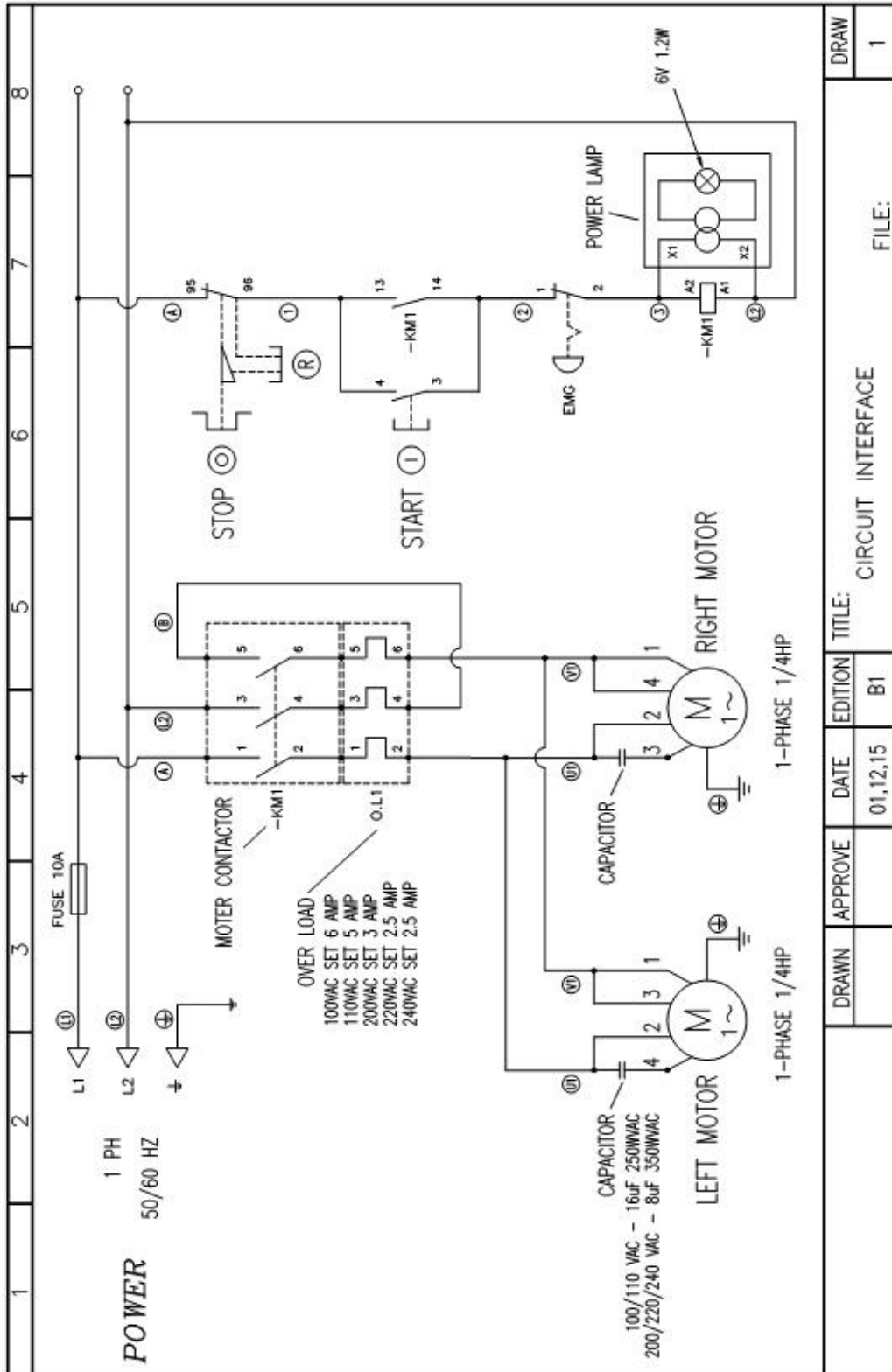
Plug in and turn on the SB-Ex Ran Case Taper to resume operation.

Parts List

Electrical



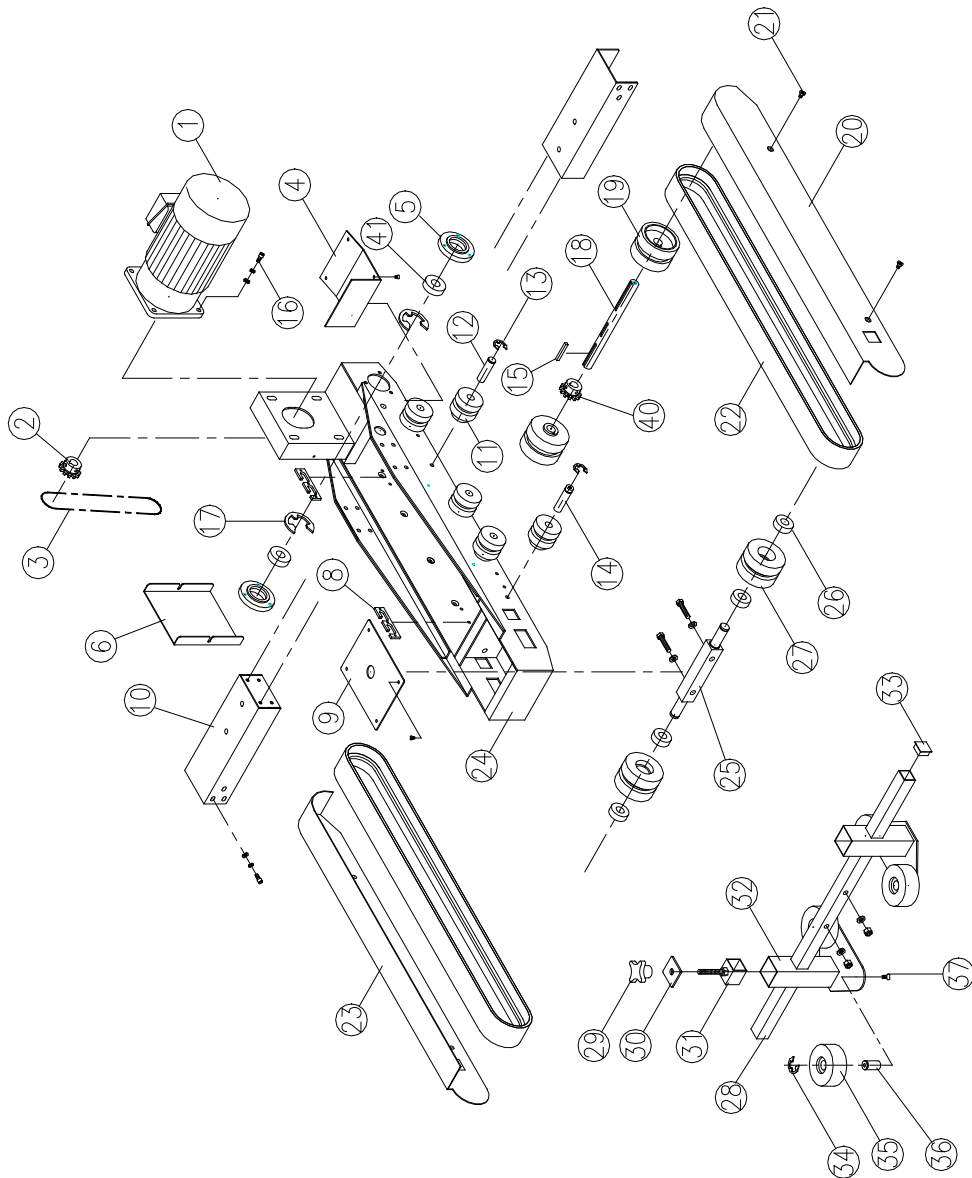




DRAW		TITLE:		EDITION		DATE		APPROVE		DRAWN	
1		CIRCUIT INTERFACE		B1		01,12,15					
FILE:										1	

KEY NO	PART NO.	DESCRIPTION	Q'TY
1	7155BC01	EMG. SWITCH	1
	7158BZ02	BUTTON SEAT CONTACTOR NCx1	1
2	7066P001	1/2" CONNECTOR	1
3	7065C062	1/2" PROTECT TUBE	1
4	7066C064	1/2" 90° CONNECTOR	1
11	70560601	TERMINAL BLOCKS TB6P	1
12	7032SW01	CONNECTOR	1
13	71570002-01	BREAKER LC1-D09F7 110V	1
	71570003-01	BREAKER LC1-D09M7 220V	1
14	71570002-02	OVERLOAD PROTECTOR LR3-D106(4-6A)	1
	71570003-02	OVERLOAD PROTECTOR LR3-D086(2.5-4A)	1
15	7155AL01	BUTTON	1
16	7155AA03	BUTTON	1
	7158AZ01	CONTACTOR NOX1	1
17	7151AV01	POWER LAMP 220V	1
	7150AV01	BLANKIG PLUG	1
	7151AV02	POWER LAMP 110V	1
	7150AV01	BLANKIG PLUG	1
18	7025AG16	FIXED SEAT	4
19	72561003	FUSE	1
	7250FH01	FUSE SEAT	1
20	7155AL01-1	ENCLOSURE	1

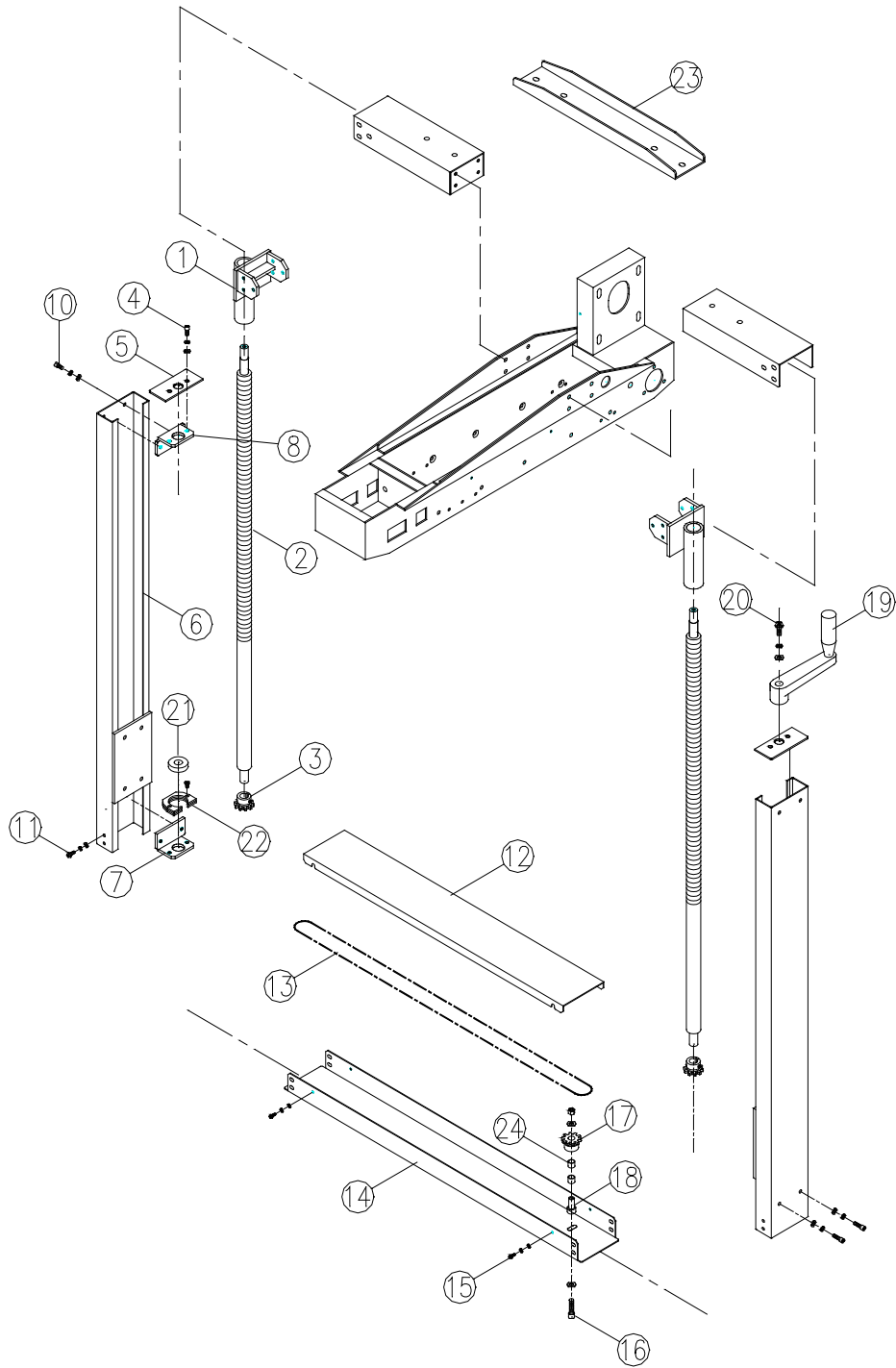
Upper Taping Seat



KEY NO	PART NO.	DESCRIPTION	Q'TY
1	745111L1	MOTOR 110V/60HZ,T18:1	1
	745122L1	MOTOR 220V/60HZ,T18:1	1
	745122L2	MOTOR 220V/50HZ,T15:1	1
	745124L2	MOTOR 240V/50HZ,T15:1	1
	745138L1	MOTOR 380V/50HZ,T15:1	1
	745140L1	MOTOR 400V/50HZ,T15:1	1
	2	CA331200	MOTOR SPROCKET WHEEL
3	3240S35C	CHAIN	1
4	CA130600	COVER PLATE (2")	1
	CA130610	COVER PLATE (3")	1
5	CA131000	BEARING SEAT	2
6	CA331100	MOTOR COVER	1
7			
8	CA100300	B-PLATE	4
9	CA130300	COVER PLATE (2")	1
	CA130310	COVER PLATE (3")	1
10	CA130200	SUPPORT SET (2")	2
	CA130210	SUPPORT SET (3")	2
11	CA301300	PLASTIC PULLEY	10
12	CA301400	PULLEY SHAFT	6
13	11301200	RING STW-12	10
14	CA130700	PULLEY SHAFT	4
15	10925300	KEY	1
16	10100825	SCREW M8*25L & S.W & W	4
17	11314000	RING RTW-40	2
18	CA331400	DRIVER SHAFT(2")	1
	CA331410	DRIVER SHAFT(3")	1
19	CA301900	PULLEY DRIVER	2
20	CA1312R0	BELT COVER	1
21	10200610	SCREW M6*10L & S.W & W	4
22	CA331900	BELT	2

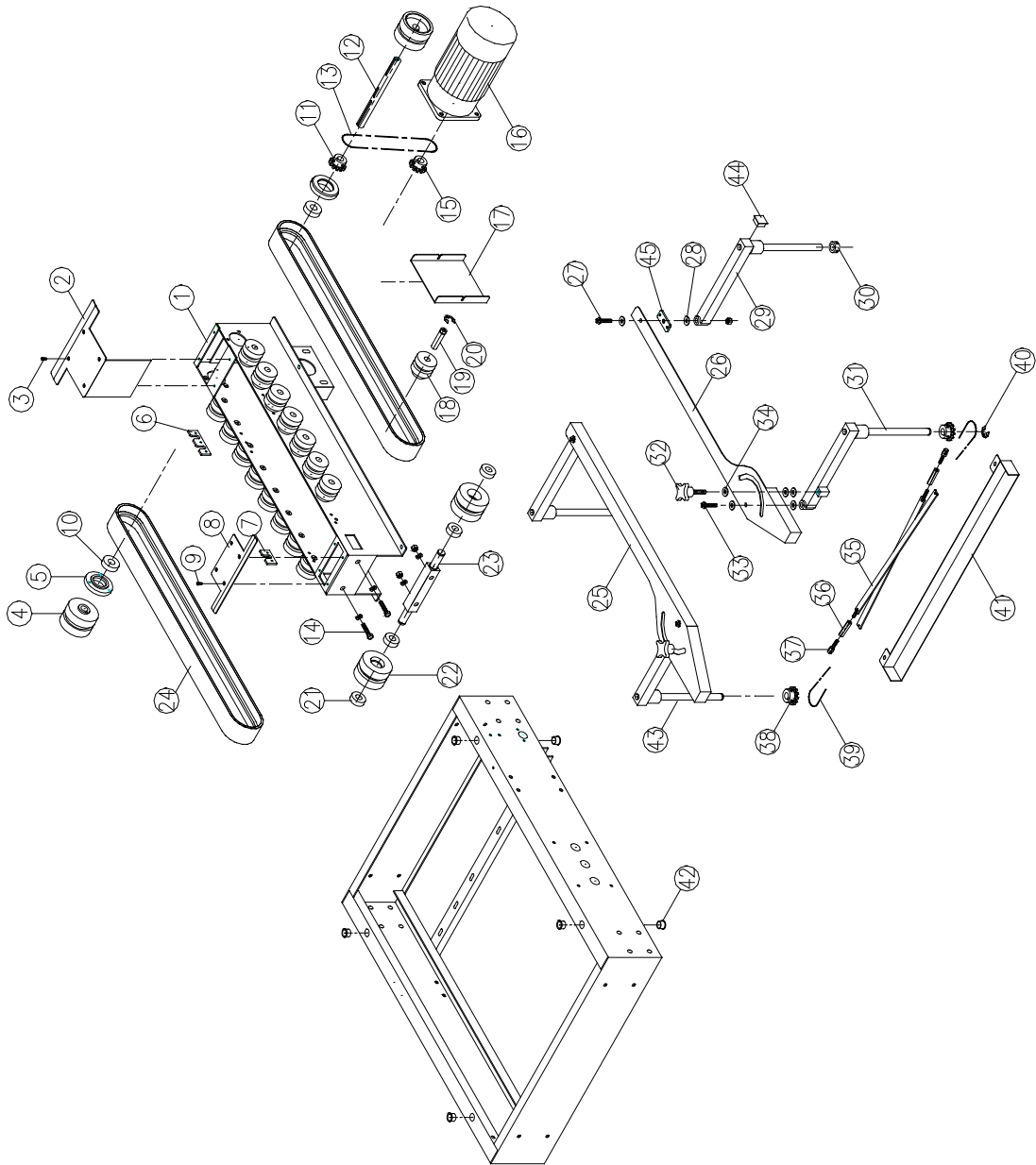
23	CA1312L0	BELT COVER	1
24	CA13010A CA130110	UPPER TAPING SEAT (2") UPPER TAPING SEAT (3")	1 1
25	CA330800 CA330810	ADJUSTABLE SHAFT(2") ADJUSTABLE SHAFT(3")	1 1
26	30300030	BEARING 6003ZZ	4
27	CA301100	PULLEY FOLLOWER	2
28	CA101000	SUPPORT BAR	1
29	CA101600	HANDLE KNOB	2
30	CA100900	LOCKING BRACKET	2
31	CA131300	SCREW KNOB	2
32	CA130400	COMPRESSION ROLLER SEAT	2
33	91350001	RUBBER PLUG	2
34	11301700	RING STW-17	4
35	CA100600	COMPRESSION ROLLER	4
36	CA100700	COMPRESSION ROLLER SHAFT	4
37	10140610	SCREW M6*10L	4
40	CA331300	MOTOR SPROCKET WHEEL	1
41	30302030	BEARING 6203ZZ	2

Vertical Column



KEY NO	PART NO.	DESCRIPTION	Q'TY
1	CA200900	SPINDLE SUPPORT	2
2	CA230300	HEIGHT ADJUSTMENT SPINDLE	2
3	CA200800	CHAIN WHEEL	2
4	10100612	SCREW M6*12L & S.W & W	4
5	CA20040A	COVER PLATE	2
6	CA23010A	COLUMN	2
7	CA200300	SET PLATE	2
8	CA200200	SET PLATE	2
9			
10	10100612	SCREW M6*12L & S.W & W	8
11	10100612	SCREW M6*12L & S.W & W	8
12	CA230500	CHAIN PLATE	1
13	3240S359	CHAIN	1
14	CA230400	CHAIN COVER	1
15	10190410	SCREW M4*10L & S.W & W	4
16	10100635	SCREW M6*35L & S.W & NUT	1
17	CA201600	CHAIN WHEEL	1
18	CA201700	CHAIN WHEEL SHAFT	1
19	CA201500	HANDLE CRANK ARM	1
20	10170816	SCREW M8*16L & S.W & W	1
21	30302020	BEARING 6202ZZ	2
22	CA304500	BEARING SEAT	2
23	CA131900 CA131910	FIXEDLY BRACHIUM (2") FIXEDLY BRACHIUM (3")	1 1
24	CT212100	BUSH Ø10 x Ø12 x 10L	2

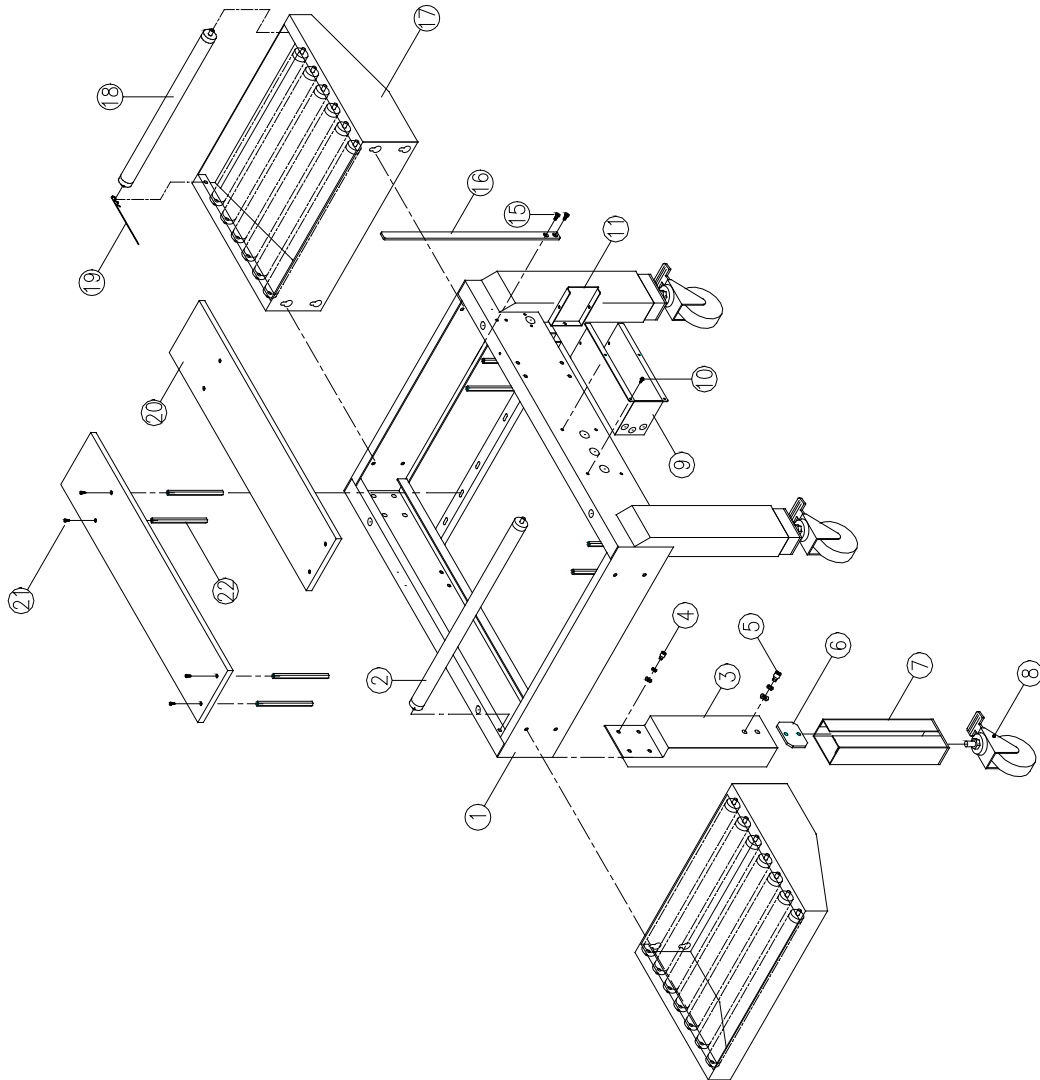
Lower Taping Seat



KEY NO	PART NO.	DESCRIPTION	Q'TY
1	CA330200	UNDER TAPING SEAT (2")	1
	CA330210	UNDER TAPING SEAT (3")	1
2	CA332200	COVER (2")	1
	CA332210	COVER (3")	1
3	10140406	SCREW M4*6L	4
4	CA301900	PULLEY DRIVER	2
5	CA131000	BEARING SEAT	2
6	CA33070A	B-PLATE	2
7	CA33060A	A-PLATE	2
8	CA331700	COVER (2")	1
	CA331710	COVER (3")	1
9	10140406	SCREW M4*6L	4
10	30302030	BEARING 6203ZZ	2
11	CA331300	MOTOR SPROCKET WHEEL	1
12	CA331400	DRIVER SHAFT (2")	1
	CA331410	DRIVER SHAFT (3")	1
13	3240S357	CHAIN	1
14	10110870	SCREW M8*70L & NUT	2
15	CA331200	MOTOR SPROCKET WHEEL	1
16	745111M1	MOTOR 110V/60HZ,T18:1	1
	745122M1	MOTOR 220V/60HZ,T18:1	1
	745122M2	MOTOR 220V/50HZ,T15:1	1
	745124M2	MOTOR 240V/50HZ,T15:1	1
	745138M1	MOTOR 380V/50HZ,T15:1	1
	745140M1	MOTOR 400V/50HZ,T15:1	1
17	CA331100	MOTOR COVER	1
18	CA301300	PLASTIC PULLEY	16
19	CA301400	PULLEY SHAFT	16
20	11301200	RING STW-12	16

21	30300030	BEARING 6003ZZ	4
22	CA301100	PULLEY FOLLOWER	2
23	CA330800 CA330810	ADJUSTABLE SHAFT (2") ADJUSTABLE SHAFT (3")	1 1
24	CA331900	BELT	2
25	CA3303L0	GUIDE RAIL	1
26	CA3303R0	GUIDE RAIL	1
27	10200840	SCREW M8*40L & NUT	2
28	CA331500	WASHER	8
29	CA330410	GUIDE RAIL CRANK	2
30	CA331600	CRANK FITTING RING	2
31	CA3305R1	GUIDE RAIL CRANK	1
32	CA101600	HANDLDE KNOB	2
33	10200840	SCREW M8*40L & NUT	2
34	CA332800	HANDLDE KNOB WASHER	6
35	CA331800	CHAIN ADJUSTMENT PLATE	2
36	CA332300	CHAIN ADJUSTMENT BAR	2
37	CA332500	CHAIN ADJUSTMENT SCREW	2
38	CA200800	CHAIN WHEEL	2
39	3240S358	CHAIN	2
40	11301500	RING STW-15	2
41	CA332100 CA332110	CHAIN COVER(2") CHAIN COVER(3")	1 1
42	32001510	BUSH ALFF-1510	8
43	CA3305L1	GUIDE RAIL CRANK	1
44	91350001	RUBBER PLUG	4
45	CA332900	DIRECT AGAINST PLATE	2

Machine Body

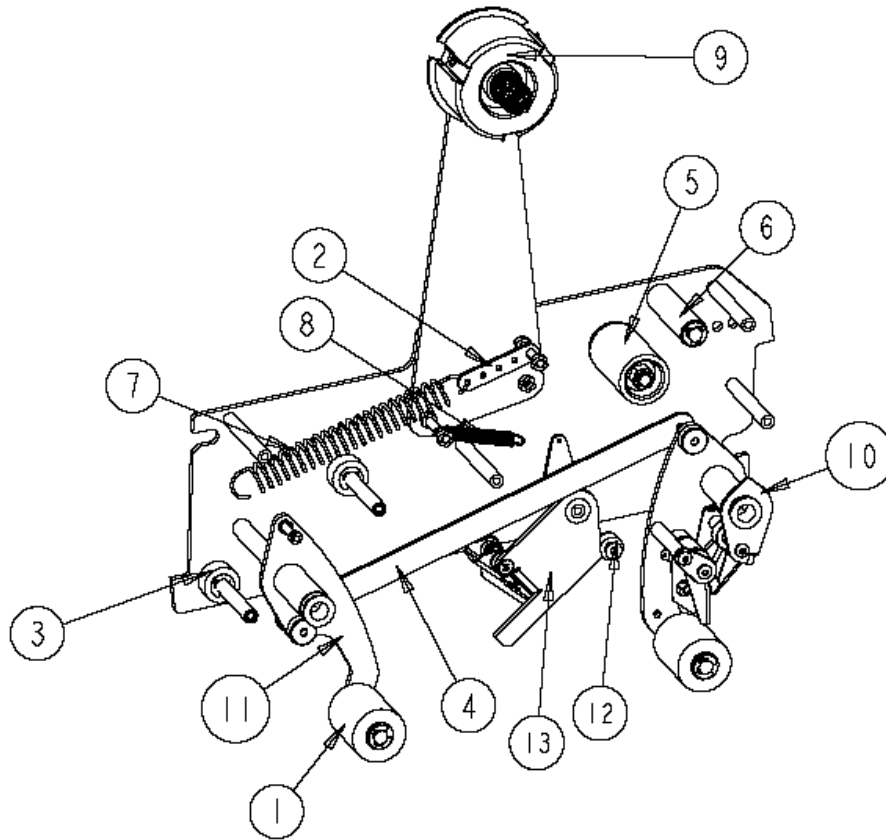


40 Illustrated Parts List

KEY NO	PART NO.	DESCRIPTION	Q'TY
1	CA33010A	MACHINE FRAME	1
2	CA332000	ROLLER	1
3	CA300200	MACHINE LEG	4
4	10100816	SCREW M8*16L & S.W & W	16
5	10101016	SCREW M10*16L & S.W & W	8
6	CA30040A	CLAMP	4
7	CA30030A	ADJUSTABLE LEG	4
8	9201L501	CASTER	4
9	CA30280A	ELECTRICAL BOX	1
10	10170510	SCREW M5*10L	4
11	CA304300	ELECTRICAL COVER	1
12			
13			
14			
15	10140612	SCREW M6*12L	2
16	CA101400	FIXED SEAT	1
17	CA430100	ROLLER SEAT	2
18	CA430200	ROLLER	14
19	10750001	PIN	7
20	CA331000 CA331010	MACHINE FRAME COVER (2") MACHINE FRAME COVER (3")	2 2
21	10140410	SCREW M4*10L	8
22	CA330900	SHAFT	8

Tape Cartridge

**EZ-TEK
INDUSTRIES INC.**

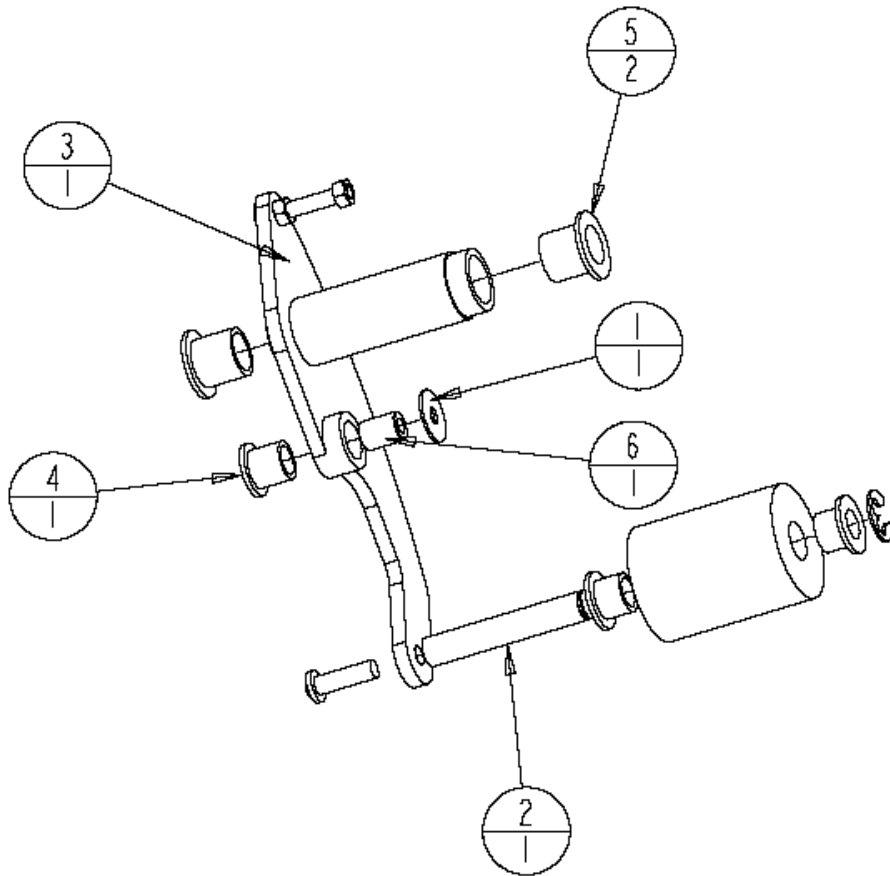


1	2	5000091	ASSY-2" WIPE ROLLER	C22-21-015
2	1	5000085	SPRING ADJUSTER, MAIN	C22-20-065
3	1	5000082	ASSY-SPACER, BASE PLATE	C22-20-083
4	1	5000097	FAB-CONNECTING LINK	C22-21-061
5	1	5000837	ASSY-2" CLUTCH ROLLER	CRA-15
6	1	5000141	ASSY-IDLER ROLLER 2" CARTRIDGE	IR-2AS
7	1	5000824	SPRING MAIN	P12
8	1	5000822	SPRING KNIFE ARM	P13
9	1	5000688	ASSY-TAPE CORE, 2" C22	TC201
10	1	5000019	ASSY-FRONT ARM 2" CARTRIDGE	
11	1	5001209	ASSY-REAR ARM, 2" CARTRIDGE	
12	1	5001210	ASSY-KNIFE ARM STOP	
13	1	5000107	ASSY-2" KNIFE ARM	KA-2
PART	QTY	MODEL PART NO.	DESCRIPTION	OLD P/N

EZ-TEK INDUSTRIES INC.		FRONT ARM ASSEMBLY 5000019		
1	1	5000238	WASHER-FLAT SS #10, 11/16"OD	
2	1	5000094	FAB/WELD-FRONT ARM,WELDMENT 2"	C22-21-052
3	1	5000681	FAB-TAPE GUIDE PLATE	C22-21-053
4	1	5000095	FAB-TAPE HOLD PLATE	C22-21-054
5	1	5000682	FAB-FRONT ARM, TOP (ROLLER)	C22-21-057
6	1	5000680	FAB-SHAFT, ROLLER PIVOT	C22-21-071
7	3	5000100	MACH-TAPE PLATE PIVOT SHAFT	C22-21-072
8	1	5000101	FAB-GUIDE ROLLER, CENTER	C22-21-073
9	2	5000102	FAB-GUIDE ROLLER, SIDE	C22-21-074
10	1	5000868	BUSHING-FLANGED 3/8"ID, 1/2"OD	P1
11	1	5000817	SET SCREW SHAFT COLLAR 3/8" ID	P11
12	1	5000821	SPRING FINGER PLATE	P14
13	1	5000830	TAPE GUIDE SPRING	P15
14	2	5000816	BUSHING-FLANGE 1/2"ID, 5/8"OD	P2
15	1	5000825	BUSHING-PLAIN 3/8"ODX.197"ID	P4
PART	QTY	MODEL PART NO.	DESCRIPTION	OLD P/N

**EZ-TEK
INDUSTRIES INC.**

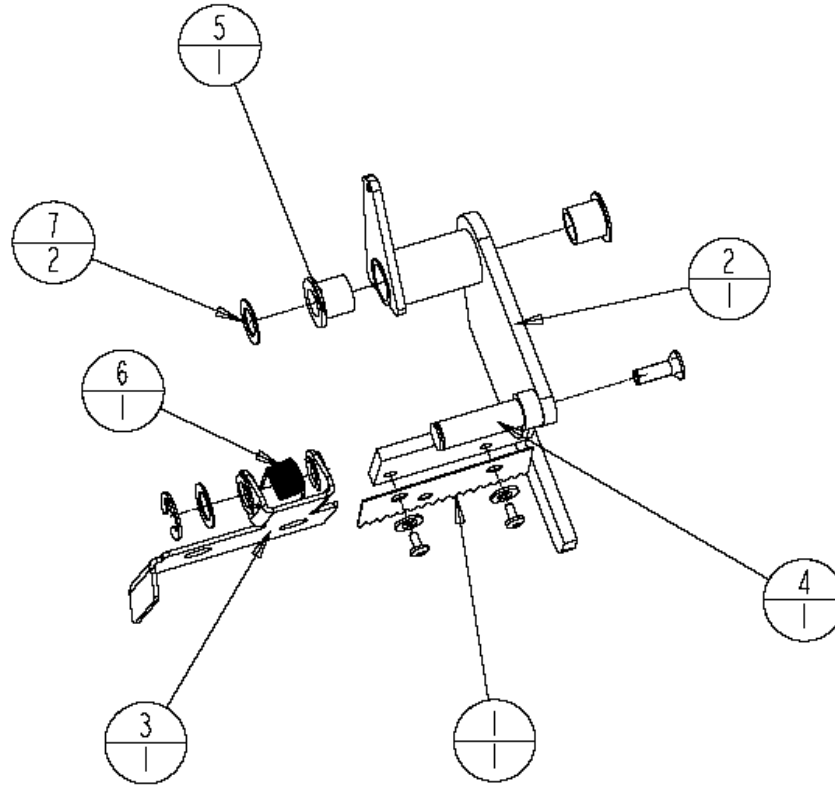
REAR ARM ASSEMBLY
5001209



1	1	5000238	WASHER-FLAT SS #10, 11/16"OD	
2	1	5000680	FAB-SHAFT, ROLLER PIVOT	C22-21-071
3	1	5000105	REAR ARM, WELDMENT	C22-22-060
4	1	5000868	BUSHING-FLANGED 3/8"ID, 1/2"OD	P1
5	2	5000816	BUSHING-FLANGE 1/2"ID, 5/8"OD	P2
6	1	5000825	BUSHING-PLAIN 3/8"ODX.197"ID	P4
PART	QTY	MODEL PART NO.	DESCRIPTION	OLD P/N

**EZ-TEK
INDUSTRIES INC.**

KNIFE ARM ASSEMBLY
5000107



1	1	5000079	KNIFE BLADE 2"	BL201
2	1	5000841	FAB/WELD-KNIFE ARM (OLD STYLE)	C22-23-067
3	1	5000108	FAB-2" KNIFE GAURD	C22-23-068
4	1	5000112	KNIFE GAURD PIVOT SHAFT 2"/13"	C22-23-081
5	1	5000868	BUSHING-FLANGED 3/8"ID, 1/2"OD	PI
6	1	5000823	SPRING KNIFE COVER	PI6
7	2	5000334	WASHER-FLAT, 3/8 SUP THN, SS	
PART	QTY	MODEL PART NO.	DESCRIPTION	OLD P/N

Warranty Statement

SB-Ex Ran Carton Sealing Machine

Warranty Statement

Eastey Enterprises warrants that all of the products it ships will be in good working order and free from defects in material and workmanship and will conform to the published specifications for that product.

Warranty Period

Drive motor(s):	1 year
Gear reducer:	3 years
Tapehead:	3 years (Except for moving parts which are subject to normal wear, tear and replacement which are warranted to be free from defects in material and workmanship.)
All other parts:	1 year (Except for moving parts which are subject to normal wear, tear and replacement which are warranted to be free from defects in material and workmanship.)

Taping Quality

Taping quality achieved in a given application is dependent on the installation, the material handling, and the maintenance provided. Eastey makes no warranty that the print quality achieved in an application will be the same as that achieved on a test piece in our laboratory.

Shipping Policy

Customer pays all incoming shipping. If the item is defective and under warranty, Eastey pays return shipping charges for least costly method. If expedited shipping is desired, customer must furnish his shipping account and shipping fees will be charged to that account.

Warranty Verification

If you conclude that a product may be defective and may be covered by warranty, obtain a Return Material Authorization number and return the defective item to Eastey. Eastey will analyze the product and, if found to be defective, we will, at our option, replace or repair the item. If the item is found to not be eligible for warranty, you will be notified and may decide on disposition. Defective products will be replaced or repaired as promptly as possible.

Warranty Eligibility

The warranty provided by Eastey Enterprises is only to the original buyer.

Limited Warranty

THE ABOVE WARRANTY IS EXCLUSIVE AND IN LIEU OF ALL OTHER WARRANTIES, WHETHER EXPRESSED OR IMPLIED, INCLUDING THE IMPLIED WARRANTIES OF MERCHANTABILITY, FITNESS FOR A PARTICULAR PURPOSE AND NONINFRINGEMENT.

Disclaimer of Damages

REGARDLESS OF WHETHER ANY REMEDY SET FORTH HEREIN FAILS OF ITS ESSENTIAL PURPOSE, IN NO EVENT WILL EASTEY ENTERPRISES, INC. BE LIABLE FOR ANY SPECIAL, CONSEQUENTIAL, INDIRECT OR SIMILAR DAMAGES, INCLUDING LOST PROFIT OR LOST OPPORTUNITIES OF ANY TYPE ARISING OUT OF THE USE OR INABILITY TO USE THESE PRODUCTS EVEN IF EASTEY ENTERPRISES, INC. HAS BEEN ADVISED OF THE POSSIBILITY OF SUCH DAMAGES.

Customer Support

Eastey Technical Service

For help setting up or operating the TB-2/3 Case Taper, please contact Eastey Technical Service at one of the numbers listed below.

Toll-Free Phone	800-877-5658
Phone	763-795-8856
Fax	763-795-8867
E-mail	info@eastey.com
Web	www.eastey.com

Thanks again for your purchase of Eastey products. We are pleased to be a part of your packaging needs.



EASTEY®